



TK International
020 7794 8700
www.t-k.co.uk

Residential Sales
Residential Lettings
Property Management

Sales Office:
9 Heath Street
Hampstead
London NW3 6TP
E: sales@t-k.co.uk

Lettings Office:
16-18 Heath Street
Hampstead
London NW3 6TE
E: lettings@t-k.co.uk

Instagram: tk.international
Twitter: @tk_int
LinkedIn: TK International
Facebook: TK International



Lawn Road Belsize Park NW3

Enviably positioned, situated on the fourth floor of this sought after recent development and accessible via a passenger lift, an immaculately presented one bedroom apartment with a bright and spacious open-plan kitchen/dining/reception room, which leads to an open West facing balcony that enjoys far reaching views towards Hampstead Heath and many hours of afternoon sun.

This stunning apartment comprises a beautifully appointed kitchen, fitted with integrated Miele appliances. The bedroom comprises newly upgraded and beautifully fitted wardrobes, and further benefits include access to a well maintained communal garden, plus communal bicycle storage.

32 Lawn Road is located within the immediate vicinity of local shops, a supermarket, pubs, restaurants and transport links, including Hampstead Heath Overground (London Overground) and Belsize Park Underground (Northern Line) within Zone 2, as well as being within walking distance of the vast expanses of Hampstead Heath.

Guide Price: £610,000

SOLE AGENT

Leasehold





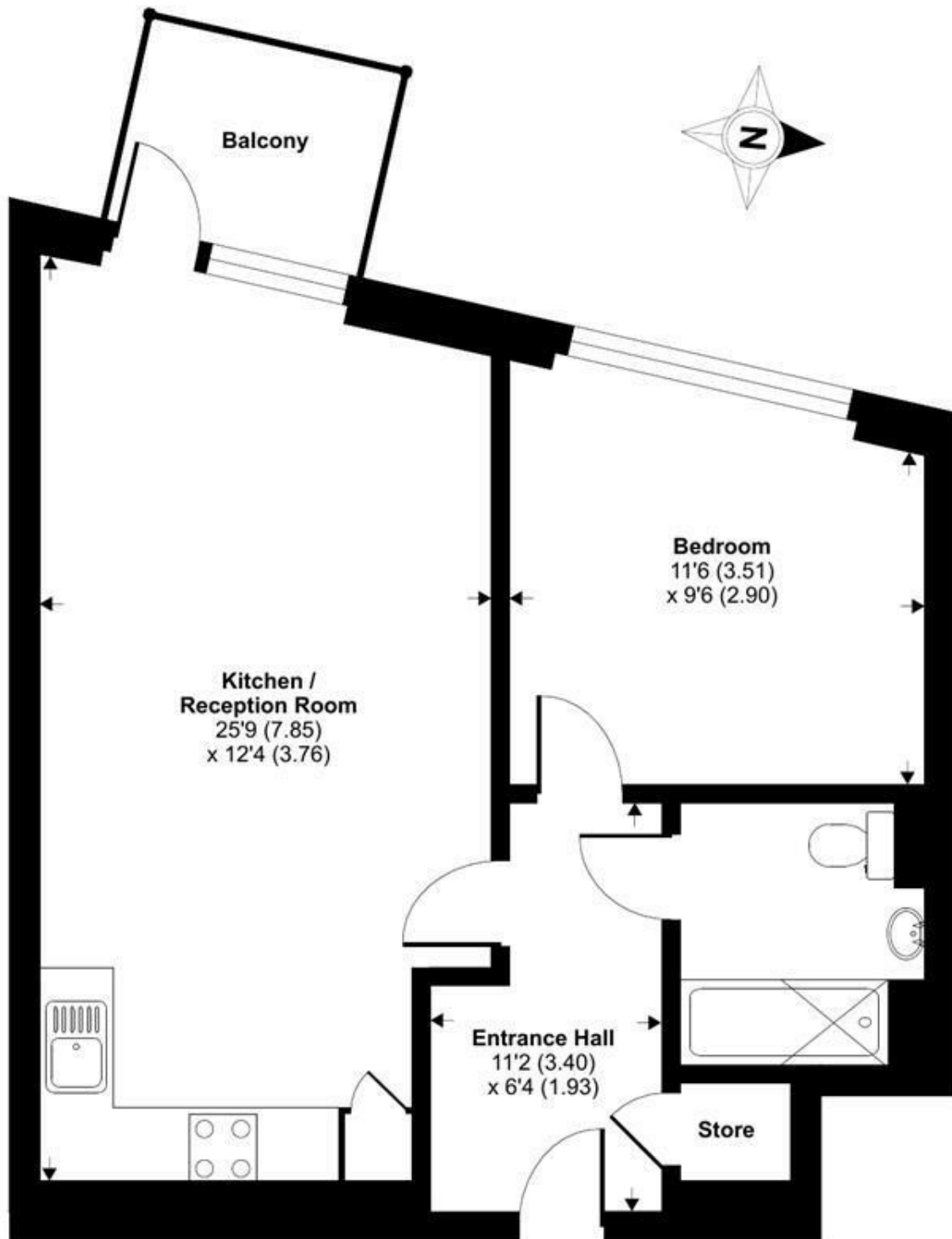




Lawn Road, NW3

Approximate Area = 542 sq ft / 50.4 sq m

For identification only - Not to scale



FOURTH FLOOR



Floor plan produced in accordance with RICS Property Measurement Standards incorporating International Property Measurement Standards (IPMS2 Residential). © nichecom 2022. Produced for TK (Hampstead) Ltd. REF: 802038